




1. Install OEM Software

Must first install the OEM software! Depending on your product configuration, option to install:


-  TIS Techstream
-  HONDA Diagnostic System
-  VIDA2008C

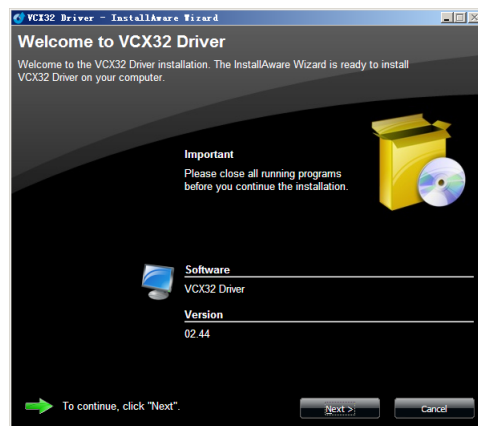
Reference 《OEM software Installation Guide》.

2. Install VCX32 Driver

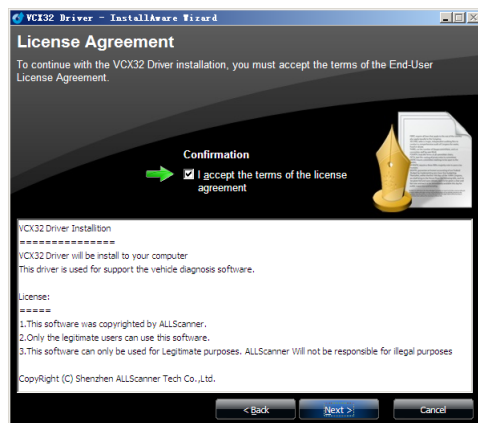
This step Must be followed after step1!

To install VCX32 Driver as follows:

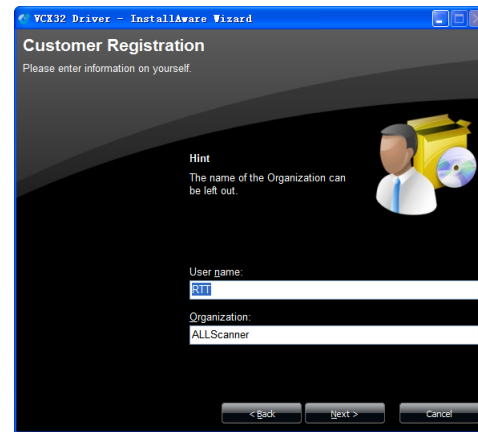
-  Double-click VCX32 Driver Install.exe



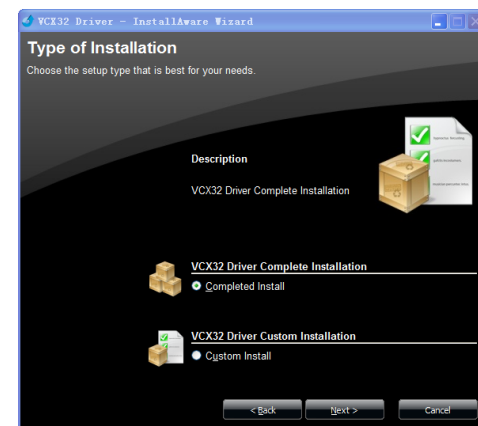
Display as fig. Click 【NEXT】



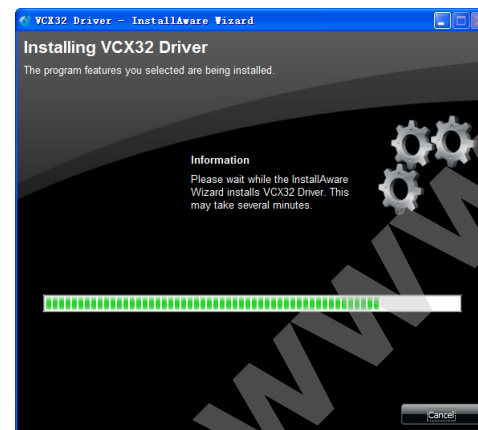
Read“License agreement” and select “I accept the terms of the license agreement” Click【NEXT】.



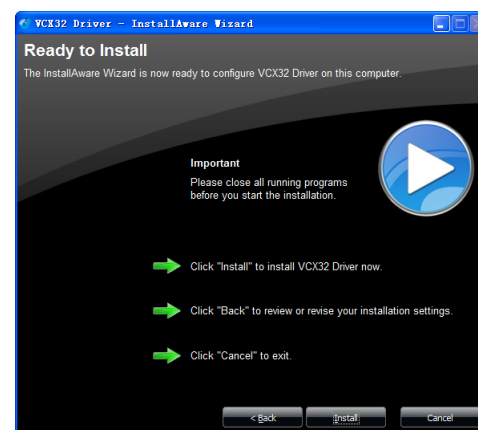
Input user information, Click 【NEXT】



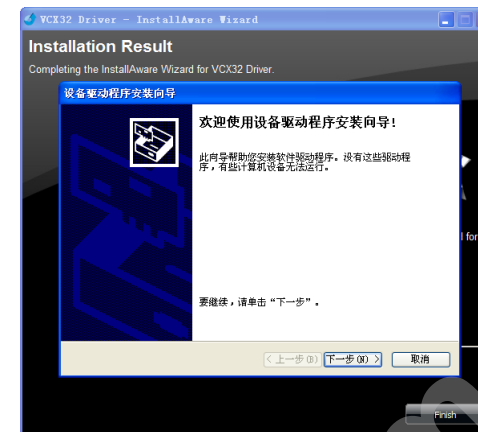
Select type of installation: “Completed Install” Click 【NEXT】



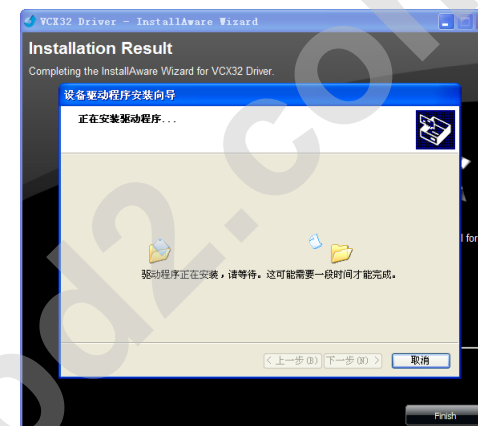
Ready to install, Click 【NEXT】 to stat.



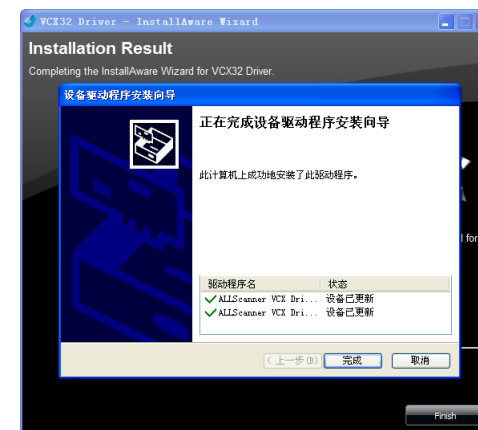
installing...



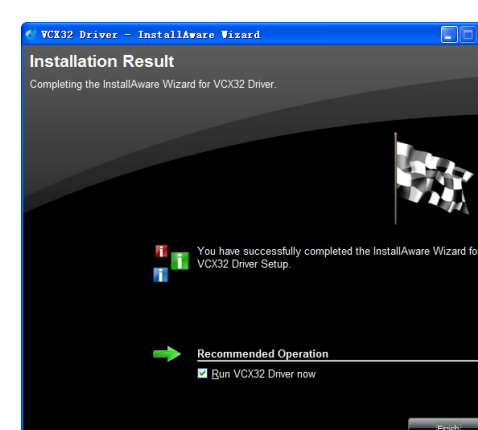
Display VCX USB Driver Installation Wizard, Click 【NEXT】



Driver Installing.....



Driver Installation finished, Click 【Finish】

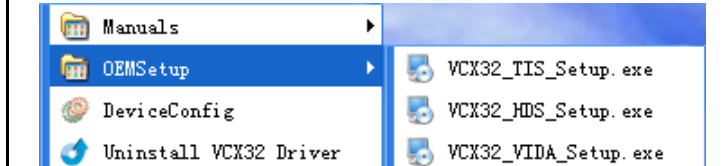


All Installation Complete, Click 【Finish】

3. Install OEMSetup

Depending on your product configuration, option to install the support driver for OEM:

Start->Program->ALLScanner->VCX32-OEMSetup



Reference 《OEM software Installation Guide》.

4. Connect Hardware

Need to connect hardware exactly before diagnosing. Please refer to the following:



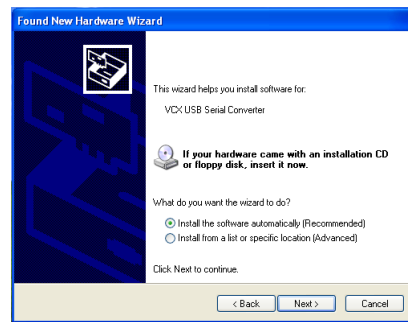
VCX obtain power from vehicle through DLC cable. The LED will flash in turn after hardware proper connection. Power Led keep on. VCX connect with PC through USB cable.

5. Install VCX USB Driver

Connect VCX USB cable to PC by the first time, it will hint that new hardware was found, please refer to the following:



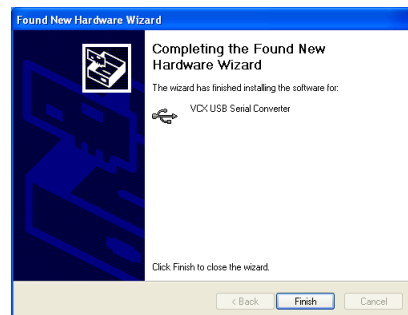
Display “Found New hardware wizard” Select “No,not this time” Click【NEXT】



Select “Install the software automatically”, Click **【NEXT】**



Dialog Box display as Fig, Click **【Continue Anyway】**



New hardware wizard Completed, Click **【Complete】**

“Found New hardware wizard”, will be displayed again, operation is same as above.

6. Test VCX Connection

Please confirm the following before connection testing:

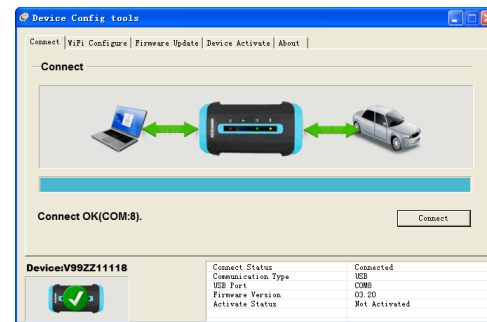
- ✓ Connect hardware according to section 4.1
- ✓ Install USB Driver according to section 4.2



Double-click DeviceConfig on the desktop.



Select the **【Connect】** page.



Click **【Connect】** Shown as fig



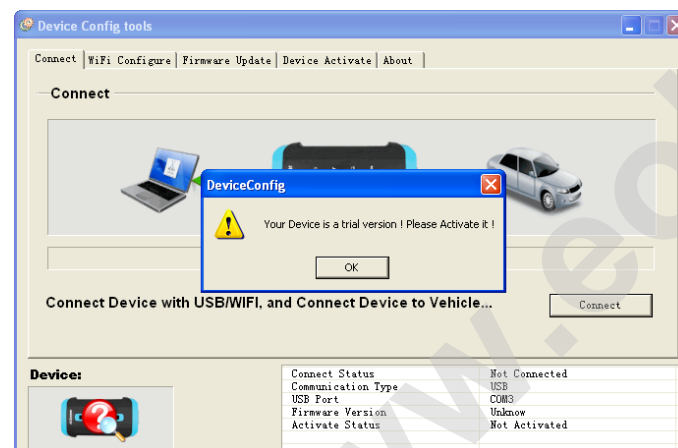
Show “Not connect” or “Connect fail”



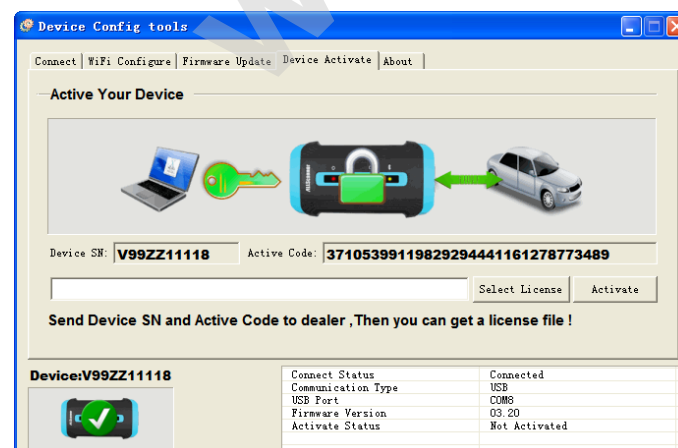
Show “Successful Connect”

7. Activate VCX Device

Connect hardware, Open DeviceConfig:

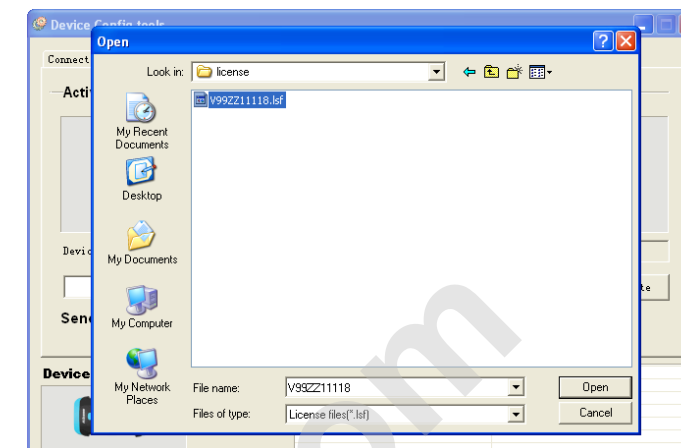


Display as above Fig, it shows device was not activated. Click **【OK】**, And Click **【Connect】**

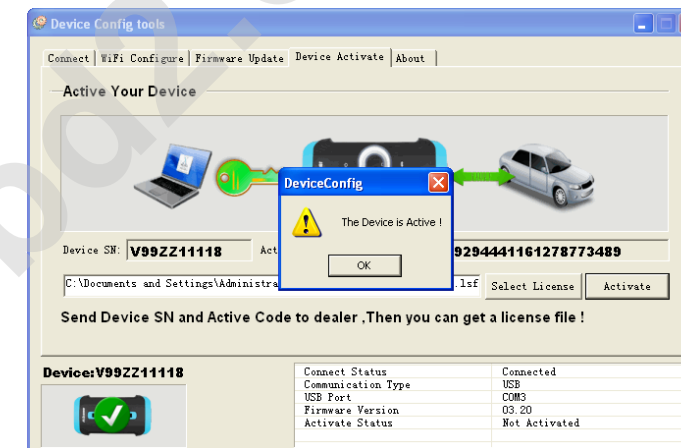


Select the **【Device Activate】** page, Please record

Device SN and Active Code, provide them to dealer for License(Activation file)



After receiving License file, Click **【Select License】** to select this file.



Click **【Activate】**, Display “The Device is Activated”, It shows Activation successful. Click **【OK】**

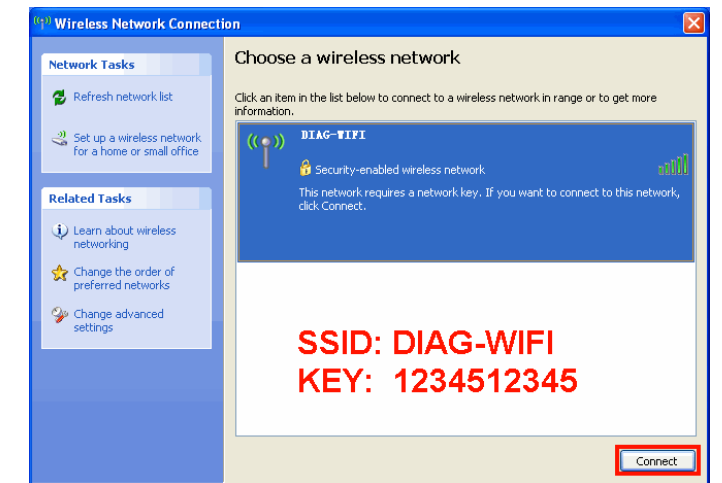
8. Configure Wi-Fi network

Please confirm the following before using:

- ✓ Use only the wireless router included in the package
 - ✓ 802.11a/b/g wireless card needed for Laptop
- Connect VCX to Vehicle and get power from it. Turn on the wireless router.

First, Make Laptop to connect to the wireless network:

Net Name(SSID): “DIAG-WIFI”
Connect KEY: “1234512345”



Open DeviceConfig, Select the **【WiFi Configure】** page, and Select **【WiFi】**. Then Click **【Scan WiFi】**.



After a successful scan, It will list all devices with IP. Then select the IP of device, and click **【Connect】** to connect with Device.



【Warning】 Any changes to the wireless router would cause the device to not work.