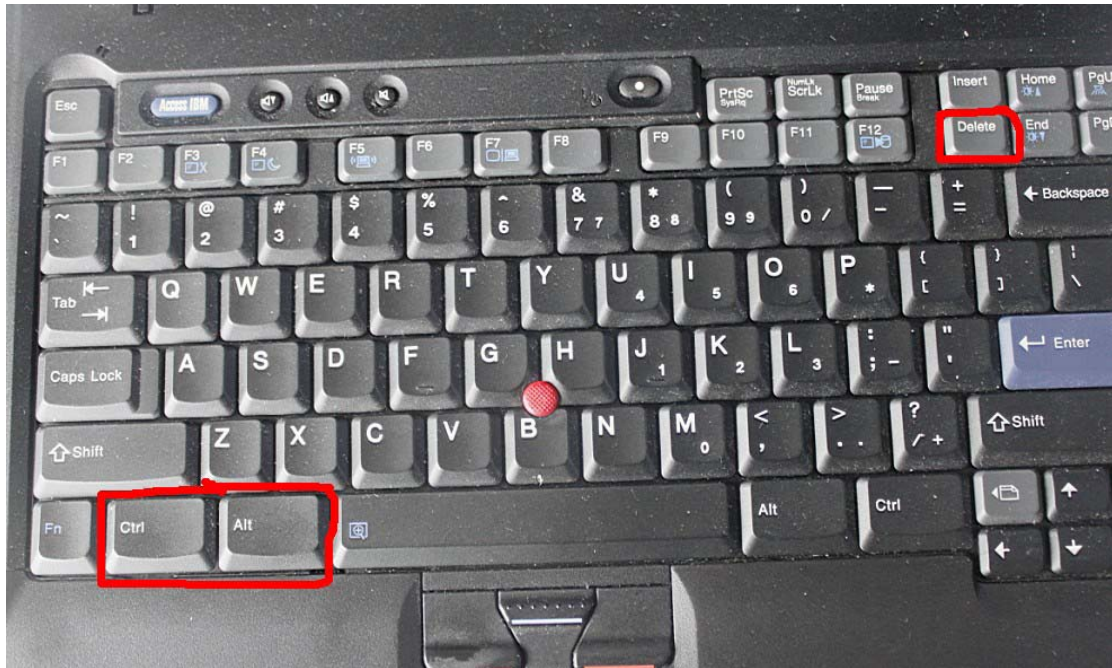


What to do if you can't use Renault can clip software?

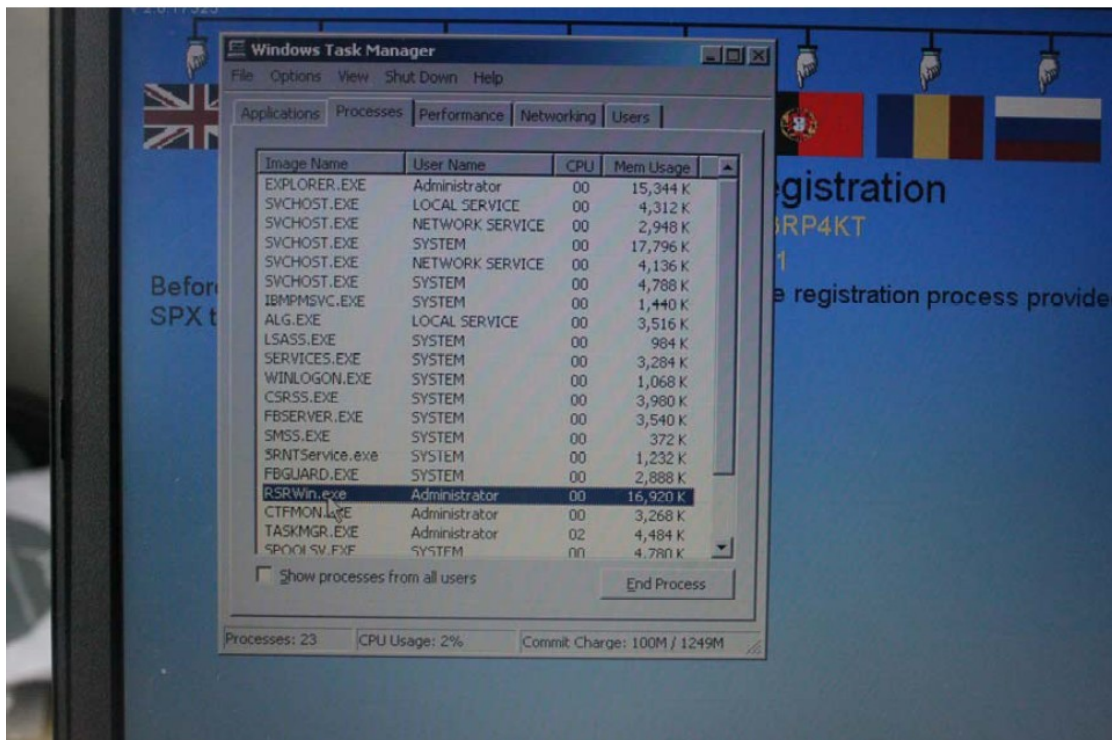
Renault can clip software suggest as following shows-you can't enter the system



Then what should you do to deal with such problem? The answer is to press **ctrl+alt+delete**, then go to **Windows Task Manager**



Select **“Process”** to find **RSRwin.exe**, then **“End Process”**



Now you are able to go on use Renault can clip software

