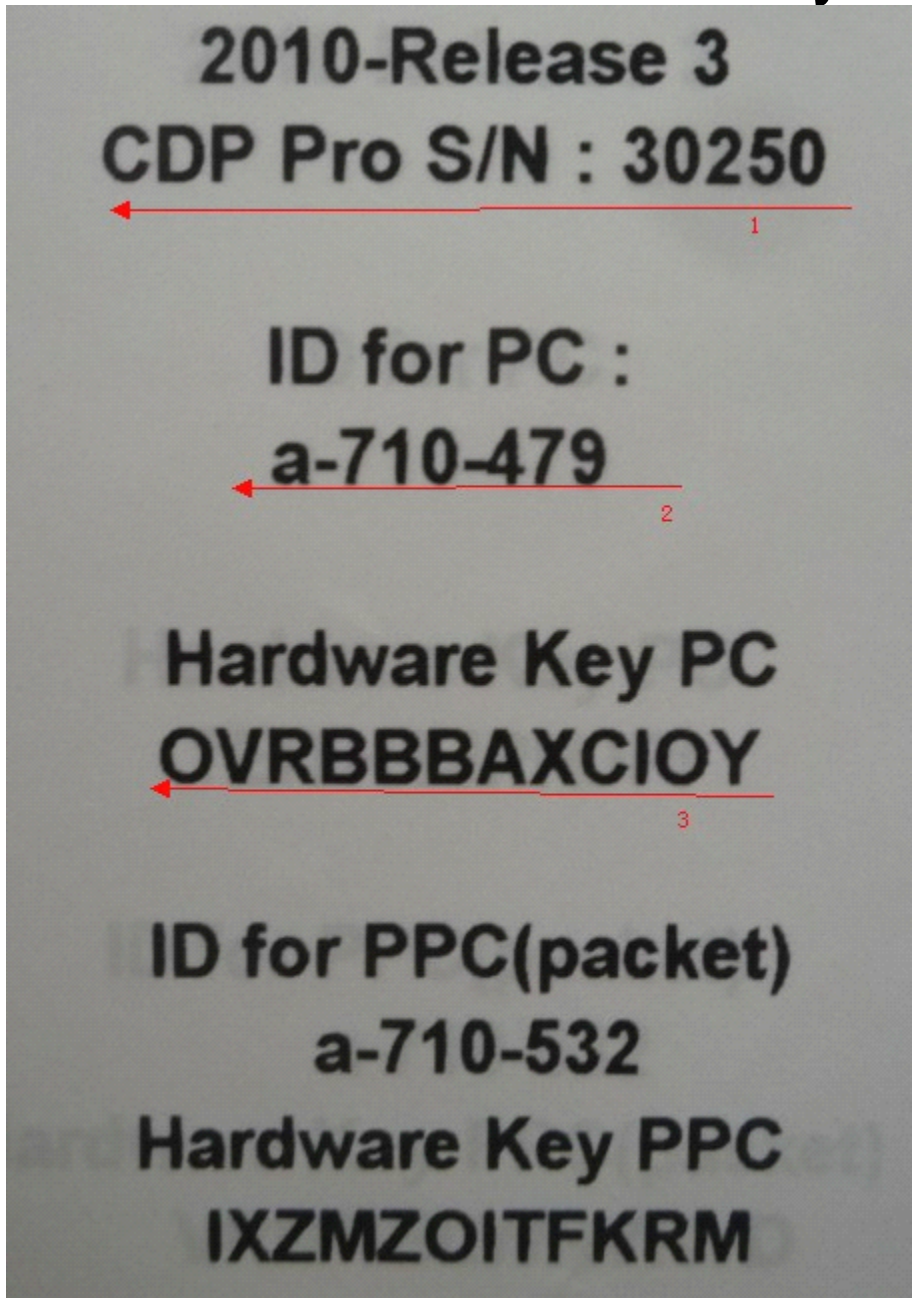


auto com cdp pro setup instruction

1, Show how to find Autocom cdp-pro sn***
Pc-code*** hardware key***



2, system requirements and setup notes

2 System requirements

2.1 Minimum

- Intel® Pentium® II 400 MHz (or similar)
- Windows 7, Windows Vista®, Windows 2003 Server, Windows® XP(*) SP3
- 128-512 MB RAM (depending on operating system)
- 500 MB free hard disk space
- Screen with resolution 800 x 600
- DVD-unit
- Bluetooth (SPP) or USB
- Microsoft .NET Framework 3.5 or later (included in installation)
- Adobe Acrobat Reader 4.0 or later

2.2 Recommended

- Intel® Pentium® 4 1.7 GHz or better (or similar)
- Windows 7, Windows Vista®, Windows® XP(*) SP3
- 1024-2048 MB RAM (depending on operating system)
- 500 MB free hard disk space
- Screen with resolution 1024 x 768 or better
- DVD-unit
- Bluetooth (SPP) or USB
- Microsoft .NET Framework 3.5 or later (included in installation)
- Adobe Acrobat Reader 4.0 or later

(*) Windows® XP Media Center Edition and its different version are not supported!

Note! Both 32-bit and 64-bit operating systems are supported, note that 64-bit OS require installation of USB drivers.

3, connect car with hardware, start to test communication



4, Choose VCP com-port, test ok!

Settings

Workshop Language **Hardware setup**

VCI connection Automatic Manually

COM-port
COM6 (VCP) **Test**
Not tested

Update firmware

Update

1. Connect tester to power supply.
2. Press the UPDATE button.

OK Cancel

Settings

Workshop Language **Hardware setup**

VCI connection Automatic Manually

COM-port
COM6 (VCP) **Test**
Test: OK!

Hardware	CDP
Serial number	30250
Generic OBD	207
Firmware version	1240

Update firmware

Update

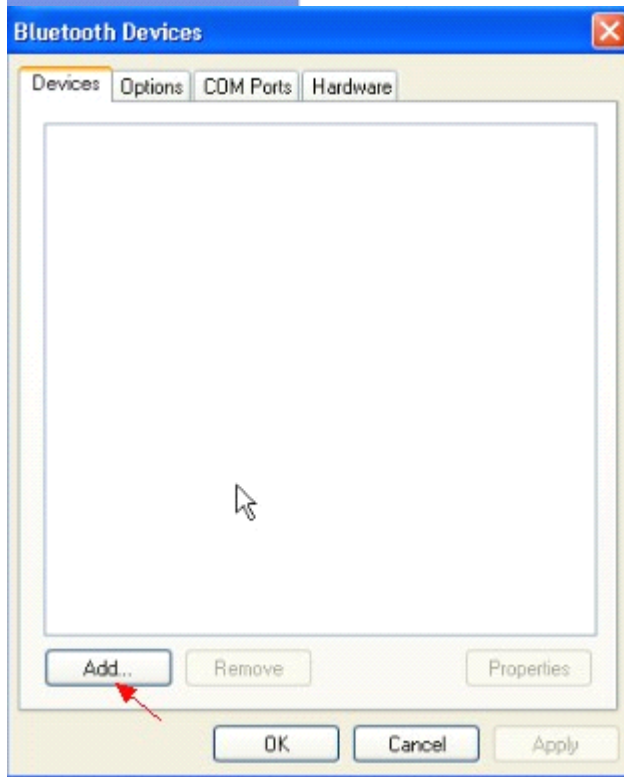
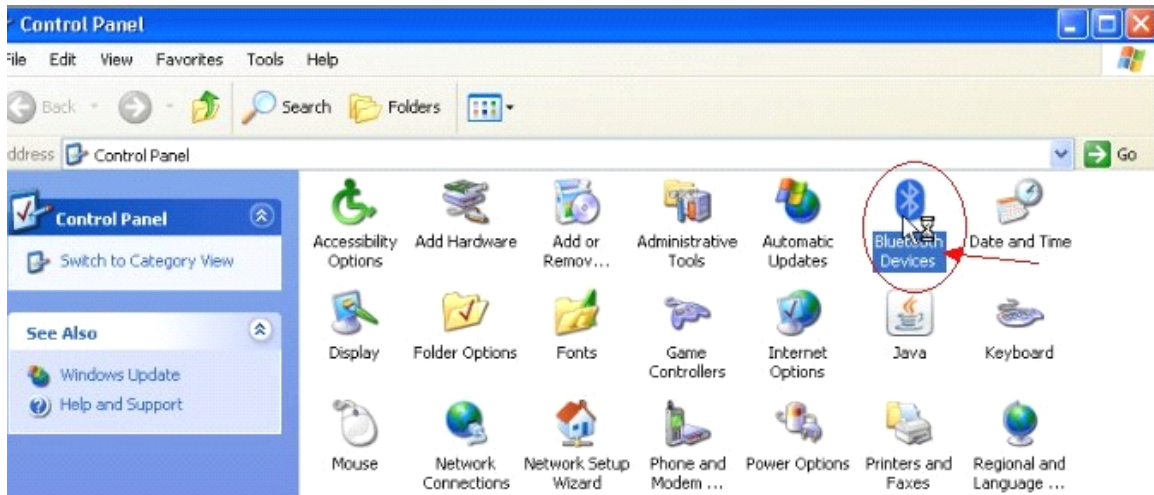
1. Connect tester to power supply.
2. Press the UPDATE button.


OK Cancel


5, Select the car model you want to test.

The screenshot displays the '1. Select vehicle' section of the software. It features three dropdown menus: 'Brand' with 'Citroën' selected, 'Model' with 'XM' selected, and 'Year model' with '2000' selected. Below this is the '2. Select system' section with three dropdowns: 'Type of system' with 'Fuel/Ignition' selected, 'Engine code' with 'RGX' and '2.0L' selected, and 'System' with 'Motronic MP 3.2' selected. The '3. Select options' section has 'Gearbox' set to 'MT/AT' and an empty 'Equipment' field. A red 'X' icon is on the left, and an 'OBD' button is on the right. A status bar at the bottom reads 'Citroën - XM - 2000 - RGX - Motronic MP 3.2 - MT/AT'. The application window title is 'auto-com' and the menu bar includes 'File', 'Settings', 'Documents', 'Bookmarks', 'External programs', and 'Help'. The 'Information' panel on the left shows 'Communication established' and instructions to use the left menu buttons, with a tip to hover over buttons for hints.

6, Set Bluetooth, the password for Bluetooth is 0000



Add Bluetooth Device Wizard 

Do you need a passkey to add your device? 


To answer this question, refer to the "Bluetooth" section of the documentation that came with your device. If the documentation specifies a passkey, use that one.

Choose a passkey for me

Use the passkey found in the documentation:

Let me choose my own passkey:

Don't use a passkey

 You should always use a [passkey](#), unless your device does not support one. We recommend using a passkey that is 8 to 16 digits long. The longer the passkey, the more secure it will be.