

User manual HITAG-2 programmer



User Manual Doc Nr: 01

HITAG-2 Programmer Date: 15.04.2008/V4.0.0.0

WWW.SIMONANDTONY.COM

- 2 -

Table of Content

1 INTRODUCTION
2 HARDWARE REQUIREMENTS
3 INSTALLATIONS
4 USING OF PROGRAMMER
5 NOTES ABOUT HITAG-2 TRANSPONDERS

Revisions

Changes to the previous version are shown in italic.

Date Sym Description 'new rev.

23-Feb-2008id Initial Release 1.0

03-Nov-2008 id Changes in document according applied new software version 4.0.0.0

08-Nov-2008 id Changes in document according applied new software version 4.0.0.0 **User Manual** Doc Nr: 01

HITAG-2 Programmer Date: 15/04.2008/1.00

WWW.SIMONANDTONY.COM

- 3 -

1 Introduction

HITAG-2 programmer is device programmer intended for programming of HITAG-2 transponders

Compatible with PHILIPS PCF7936 transponders. It can be used for reading/programming of following

Type transponders:

- PCF7936
 - PCF7941
 - PCF7942
 - PCF7944
 - PCF7946
 - Compatible with mentioned above
- Programmer supports both modes – PASSWORD and CIPHER mode



Fig.1 PCF7936 transponder

User Manual Doc Nr: 01

HITAG-2 Programmer

WWW.SIMONANDTONY.COM

-4-

2 Hardware requirements

- IBM compatible PC running Windows™ 95/98/ME/2000/NT4/XP
- VGA display card (800x600)
- USB port

3 Installation

Connect your programmer to USB port and follow instructions in the documents bellow depends of

your operation system.

Windows_98_Installation_Guide.pdf

Windows_XP_Installation_Guide.pdf

Windows_2000_Installation_Guide.pdf

Once driver installed your PC will be equipped with additional virtual COM port.

Go in “my computer/properties” -> “hardware” -> “device manager” -> “Ports” and check which

COM

port number is installed.

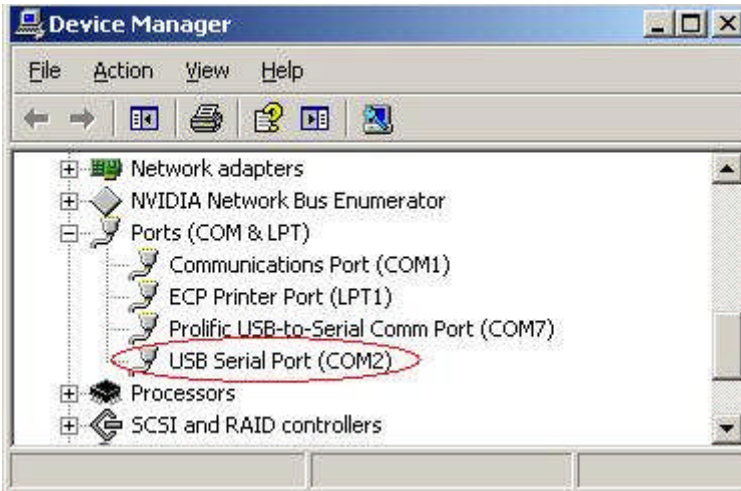
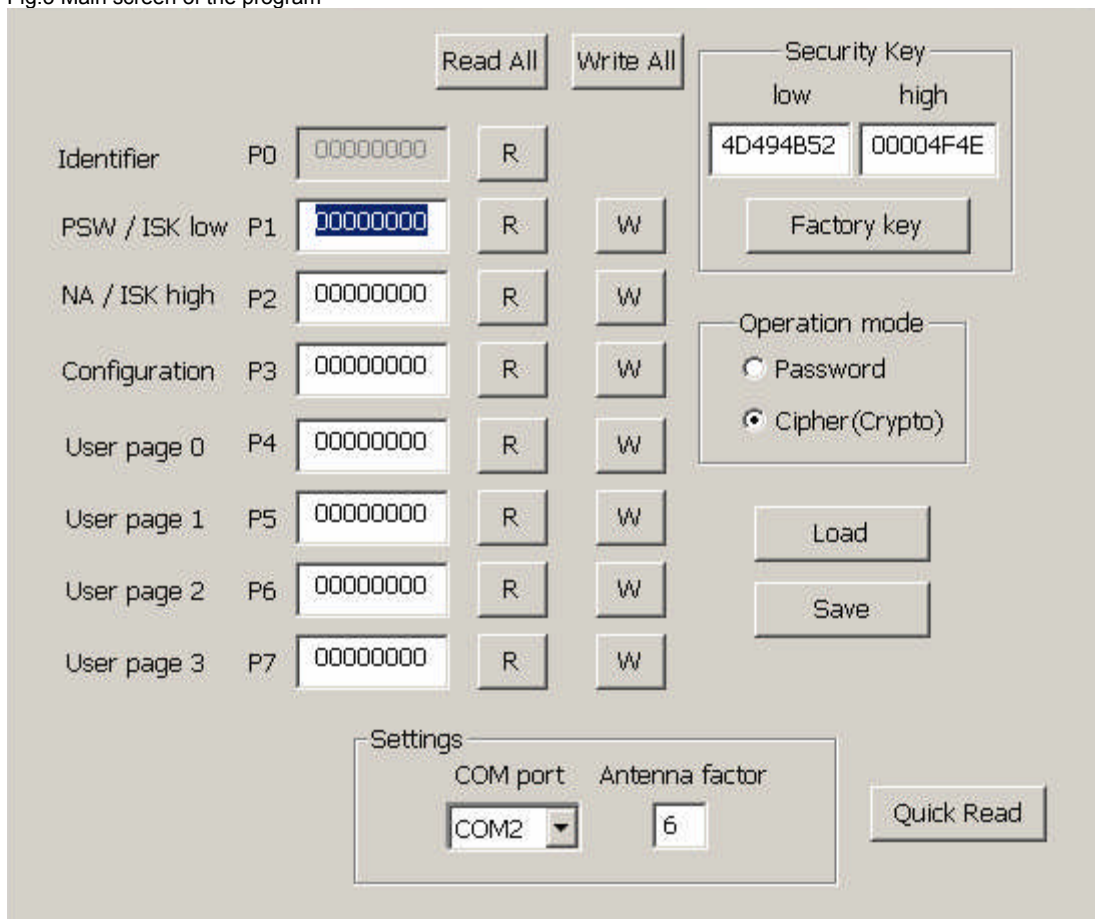


Fig.2 USB serial port

User Manual Doc Nr: 01 HITAG-2 Programmer

WWW.SIMONANDTONY.COM
- 5 -

Now you can start software of your programmer "HT2.exe" will appears following screen:
Fig.3 Main screen of the program



From "Settings" -> "COM port" you have to adjust number of "USB COM port" installed on your PC. Next urgent step before start working with programmer is to adjust your antenna factor. Adjusting can be done when reading some transponder using button "Quick Read" and change factor

to 4,5,6 and s.o. until is reached best reading (i.e. each attempt for reading leads to results like previous).

While manufactory programmers are adjusted to have best factor "6" but deviation are possible depends

Of your working place.

User Manual Doc Nr: 01

HITAG-2 Programmer

WWW.SIMONANDTONY.COM

- 6 -

4 Using of programmer

Put transponder on it place (refer Fig.4)



Fig.4 transponder place

Before reading or programming of transponder you must choice working mode of transponder PASSWORD or CIPHER mode.

Take into account that transponders can be read or program if you know PASSWORD of transponder

(PASSWORD/ CRYPTO WORDS LO+HI).

We have 9 different buttons for reading ("Read All" and 8 "R" separate for each page of transponder)

and also 8 buttons for programming ("Write All" and 7 "W" for each programmable page of transponder).

Bellow is example – content from key of Porsche Cayenne – PCF7946

User Manual Doc Nr: 01

HITAG-2 Programmer

- 7 -

5 Notes about HITAG-2 transponders

Please before programming of some transponder refer corresponding documents which describes features

of transponder.

Transponder must be programmed very carefully because in some of bits from configuration of transponder

can be programmed only once which leads partial reading or programming of transponder.

Additionally changing of password/ISK must be documented always to allow following reading or programming

The screenshot shows the HITAG-2 Programmer software interface. It features a table of memory addresses and their corresponding read/write operations, along with security key settings and operation mode options.

Identifier	Address	Read (R)	Write (W)
Identifier	P0	59A6D024	
PSW / ISK low	P1	4D494B52	
NA / ISK high	P2	ACDC4F4E	
Configuration	P3	08AA4854	
User page 0	P4	0400002C	
User page 1	P5	00000000	
User page 2	P6	00000000	
User page 3	P7	00001A5E	

Security Key settings:

- low: 4D494B52
- high: 00004F4E
- Factory key button

Operation mode:

- Password
- Cipher (Crypto)

Settings:

- COM port: COM2
- Antenna factor: 11
- Quick Read button

User Manual Doc Nr: 01

HITAG-2 Programmer

WWW.SIMONANDTONY.COM

- 7 -

5 Notes about HITAG-2 transponders

Please before programming of some transponder refer corresponding documents which describes features of transponder.

Transponder must be programmed very carefully because in some of bits from configuration of transponder can be programmed only once which leads partial reading or programming of transponder.

Additionally changing of password/ISK must be documented always to allow following reading or programming.